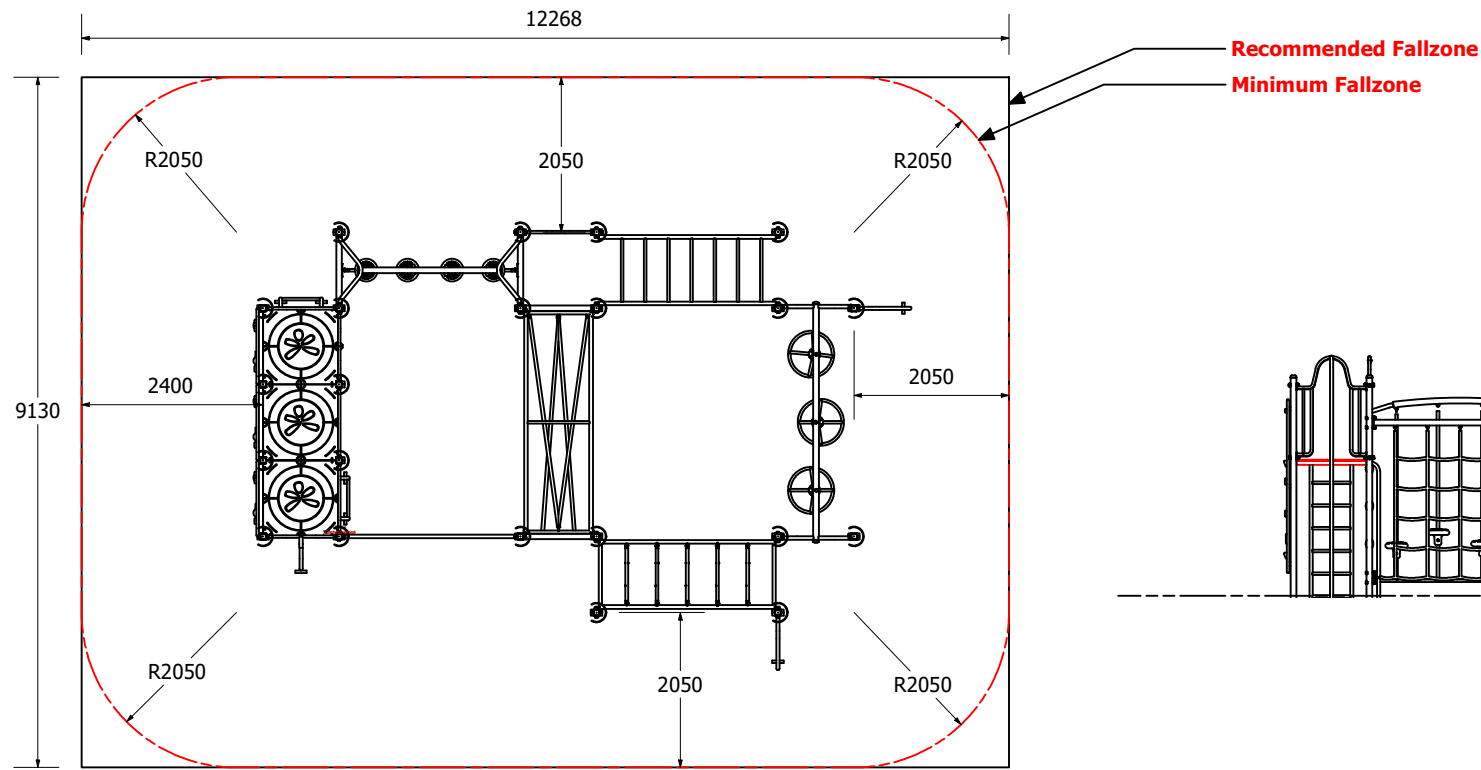
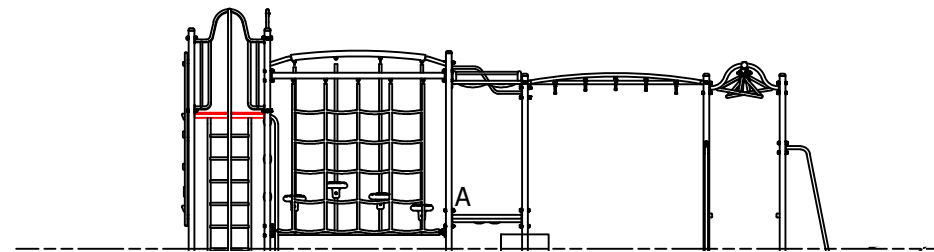


1:100 @ A3

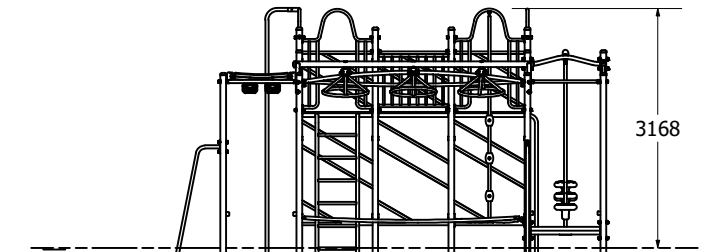
**Fallzones**



**Front Elevation**



**Right Elevation**



Technical Information	
Main Dimension	9130 x 12268
Total Area	112m2
Max FHO	2600
Heaviest Part	50kg
Compliant to	NZS 5828:2015 AS 4685:2017 EN 1176:2008

REVISION HISTORY			
REV	DESCRIPTION	DATE	BY
1	Creation	24/01/2020	Sam